

Rodopi Evros Samothraki  
*follow new paths*

high in the mountains / water routes / realm of the birds of prey / salty breeze

ALTERNATIVE FORMS OF TOURISM IN NORTH-EASTERN GREECE





Greece, a fantastic holiday destination! A country with a rich natural tapestry of overflowing light and colour, with remains of ancient civilizations on every corner, and good-natured people who love to enjoy life. Whether you travel by land or sea, you will find many charming features here, you will find a reason to return.

Thrace is a unique instance - and one of the top tourist destinations. On this north-eastern rim of the Mediterranean, nature reveals its greatest assets. Impressive mountains and rivers, forests and smooth hill ranges, lakes and lagoons, national parks and protected areas, wildlife, rare fauna, rich biodiversity. During the five thousand years of their history, the people of Thrace have developed mystical bonds with nature - it is not by chance that the Kavirians, the Orphic mysteries and the worship of Dionysus have their origins in this land. At present, the landscape is scattered with traditional villages and lively towns, characterized by a wealth of history providing a unique multicultural experience that is expressed through the acceptance of what is different through a warm and hospitable attitude.

For those who appreciate the splendour of wildlife, for those who want to feel rejuvenated and savour genuine experiences in the arms of nature, Rodopi and Evros are top of the list.  
We are expecting you!



# dear traveller welcome!

The most diverse and overwhelming parts of Greek nature, coupled with sincere, heartfelt hospitality await. Despite the multicoloured

age-long human presence and its settlements, fields and pastures, the region's scenic beauty is truly astonishing and timeless, easy accessible by Egnatia Road and Alexandroupoli's airport.

## Nature lovers will find all that they want here.

Two national parks, wildlife, rare biodiversity almost unique to Europe, trekking, birdwatching, sprawling mountains, forests, waterfalls, lakes, rivers, lagoons, islands, endless sea.

## Adventurers will find all the challenge they need.

Mountaineering, canoes, speargun fishing, the pan-Hellenic motocross championship, horseriding, mountain bikes, 4X4, exploring... the rock festival at Ardas.

## Experience seekers will find countless treasures.

The best cuisine in the Balkans, fresh fish, good wine and tsipouro, unrivalled coffee, spring baths, traditional guesthouses, archaeological excavations and museums, unique images of nature and civilisation, vibrant people and peaceful walkways.



The region is immense. This small guide will help you embark on your journey to Thrace. Choose between the basic itineraries:

High in the mountains  
Water routes  
Realm of the birds of prey  
Salty breeze



Depending on the season and your preferences, choose either a guesthouse or a campsite as the starting point for your excursions. Keep in mind that in Alexandroupoli, Komotini, Maronia, Orestiada, Didimoticho, Soufli, Feres - everywhere in this north-eastern corner of Greece, you will get high-quality services that are no longer available in modern, urban centres.



# High in the mountains

The four seasons on the mountainous Rodopi share a common characteristic: wild yet welcoming untouched nature. Forests, peaks and canyons, rivers and streams, rich fauna, geological landmarks and cultural monuments, picturesque villages, easily accessible and challenging paths, slopes suitable for climbing, caves, lodges, dirt tracks and asphalt roads - what the mountains of Rodopi have to offer, is something that can rarely be found in Europe today.



## Komotini - Iasmos - Trikorfo - Astrea

Travel from Komotini to Iasmos (22 km asphalt road) and from there to Trikorfo bridge (15 km easy dirt road), beside Kompsatos river. Park your car and set off along a lovely route (5 hours incl. return) amidst oak trees, plane trees and wild pears to Astrea. Also known as the Meteora of Thrace, it has huge monolithic natural sandstone landmarks. If your strength does not fail you, a further 40-minute walk will lead you to the village of Efthymo.

## Organi - Metaxades or Organi - Alexandroupolis

The most interesting forest route is the one crossing the mountain range of Rodopi from west to north - northeast. There is an asphalt road from Komotini to Organi (approx. 32 km). From Organi, which is the main village, like Nymphaia to the west, you follow an accessible dirt road towards Smigada and Kehro and then go down to Nea Santa (at a distance of 30 km). From Nea Santa you go uphill towards Sapka and Afhenas at an altitude of approximately 1,100 m, where you can choose between two alternative routes: either go north to Mikro and Megalo Derio and Metaxades (a 4-hour trip approx.) or south to Aisimi and Alexandroupolis (a 3-hour trip approx.). Make sure your fuel tank is full and take supplies, because you will only find food at Metaxades or Aisimi.



Far from the noise-polluted centres of mass tourism, far from the crowds and the notions of pseudoglamour, Rodopi expresses its genuine character. A lively and charming landscape that is there for you to respectfully discover; to cross from Astrea and the Kompsatos river in the west to the north-eastern foothills of the Metaxades village. You can spend a weekend enjoying the routes we recommend, but you will need at least one week to fully explore their wild beauty.



## Komotini - Mikri Ada - mountain refuge of the Hellenic Mountaineering Association of Komotini

Set off in the morning from Komotini and after 20 km of asphalt road you will arrive at Symvola. You can then follow an accessible dirt road (approx. 13 km) to the small settlement of Mikri Ada. Leave your car there and begin a beautiful, semi-hiking route amid oak and beech trees leading to the mountain refuge of the Hellenic Mountaineering Association of Komotini. The route is marked and takes 4 hours, return trip included.



## Komotini - Thamna - Mount Papikio

Setting off again from Komotini, you travel to Thamna (12 km asphalt road) and follow an accessible dirt road for 12 km as far as the outpost of Mahaira, where you leave your car. There you have two possibilities - you can either walk along the beautiful Hionorema gully heading to the refuge of the Hellenic Mountaineering Association of Komotini (a 4-hour hike incl. return) or follow the signs to Papikio - a route for veteran mountaineers (5 hours incl. return).

*E6 pathway in mountainous Rodopi*

*climbing at Strymi*

*N. Santa - M. Derio route*

*Aisimi - Alexandroupoli route*

*Maronia*

*Doxipara*



# High in the mountains

The four seasons on the mountainous Rodopi share a common characteristic: wild yet welcoming untouched nature. Forests, peaks and canyons, rivers and streams, rich fauna, geological landmarks and cultural monuments, picturesque villages, easily accessible and challenging paths, slopes suitable for climbing, caves, lodges, dirt tracks and asphalt roads - what the mountains of Rodopi have to offer, is something that can rarely be found in Europe today.



In Rodopi, you will find woodsmen implementing felling programmes that benefit forest protection.



## Komotini - Iasmos - Trikorfo - Astrea

Travel from Komotini to Iasmos (22 km asphalt road) and from there to Trikorfo bridge (15 km easy dirt road), beside Kompatos river. Park your car and set off along a lovely route (5 hours incl. return) amidst oak trees, plane trees and wild pears to Astrea. Also known as the Meteora of Thrace, it has huge monolithic natural sandstone landmarks. If your strength does not fail you, a further 40-minute walk will lead you to the village of Efthymo.

## Organi - Metaxades or Organi - Alexandroupolis

The most interesting forest route is the one crossing the mountain range of Rodopi from west to north - northeast. There is an asphalt road from Komotini to Organi (approx. 32 km). From Organi, which is the main village, like Nymphaia to the west, you follow an accessible dirt road towards Smigada and Kehro and then go down to Nea Santa (at a distance of 30 km). From Nea Santa you go uphill towards Sapka and Afhenas at an altitude of approximately 1,100 m, where you can choose between two alternative routes: either go north to Mikro and Megalo Derio and Metaxades (a 4-hour trip approx.) or south to Aisimi and Alexandroupolis (a 3-hour trip approx.). Make sure your fuel tank is full and take supplies, because you will only find food at Metaxades or Aisimi.



Stockbreeding is a tradition and a source of life for the region. Sheep and cattle folds can be seen almost everywhere, providing products of an excellent quality.

E6 pathway in mountainous Rodopi

climbing at Strynn

N. Santa - M. Derio route

Tomb at Symvola

Metaxades

Pendolofos



# Water routes

The mythical, immemorial river of Evros and its tributaries, such as Ardas, create a landscape of unique diversity and natural beauty. Set off from Alexandroupolis and continuously head north with the imposing river on your right. Cross the renowned towns of Soufli, Didimoticho and Orestiada and turn west following the meanders of Ardas as far as Pentalofos. From there, head south to Doxipara, Metaxades and Erithropotamos.



## Evros Delta

At a distance of 20 km from Alexandroupolis, the Evros river forms an ecosystem of international significance. The Delta wetland consists of riverside woods, wet meadows, reeds and lagoons. The 316 listed bird species include many waterfowls, birds of prey, herons, pelicans and seabirds, as well as rare species such as the Lesser White-fronted Goose, the Slender-billed Curlew and the Greater Spotted Eagle. The information centres at Traianoupolis and Ferres can provide visitors with information on recommended routes.



*birdwatching at the Delta National Park and at the biotope of Vistonida*



This charming excursion can take four hours or four days depending on the stops you make to visit the villages, watch birds, canoe on the river or lakes, taste the local traditional specialties, admire the hand-made silk articles, walk among the riverbanks, hillsides and forests, and get the feeling of the location that gave birth to the Orphic mysteries and to the worship of Dionysus.



## Canoeing

### Tyhero lake - Lyra lake

The artificial lake of Tyhero is ideal for beginners wanting a first taste of the joys of canoeing. Similarly enchanting is the route on the artificial lake of Lyra.

### Elia bridge-Rizia-Kastanies

An impressive descent at the beautiful Ardas river.

[canoeing is also possible in the Evros Delta, weather permitting]



## Mountain bike

### Sidiro - Giannouli - Soufli

Amid continuously alternating landscapes (cultivated land, pastures, stony grounds, pine forests and oak woods), you can enjoy mountain biking along the old road network with its stone vaulted bridges or follow the banks and course of Kamilopotamos river.

### Evros Delta

Biking permits you not only to visit the wetland – but also take part in its life. The Delta is a broad network of paths meandering amongst the reeds, abounding in wild life. Take a bottle of water, a pair of binoculars and enjoy a leisurely bike ride. You are crossing one of the world's most beautiful national parks!



*activities at the Evros Delta and Lyra lake*



# Water routes

The mythical, immemorial river of Evros and its tributaries, such as Ardas, create a landscape of unique diversity and natural beauty. Set off from Alexandroupolis and continuously head north with the imposing river on your right. Cross the renowned towns of Soufli, Didimoticho and Orestiada and turn west following the meanders of Ardas as far as Pentalofos. From there, head south to Doxipara, Metaxades and Erithropotamos.

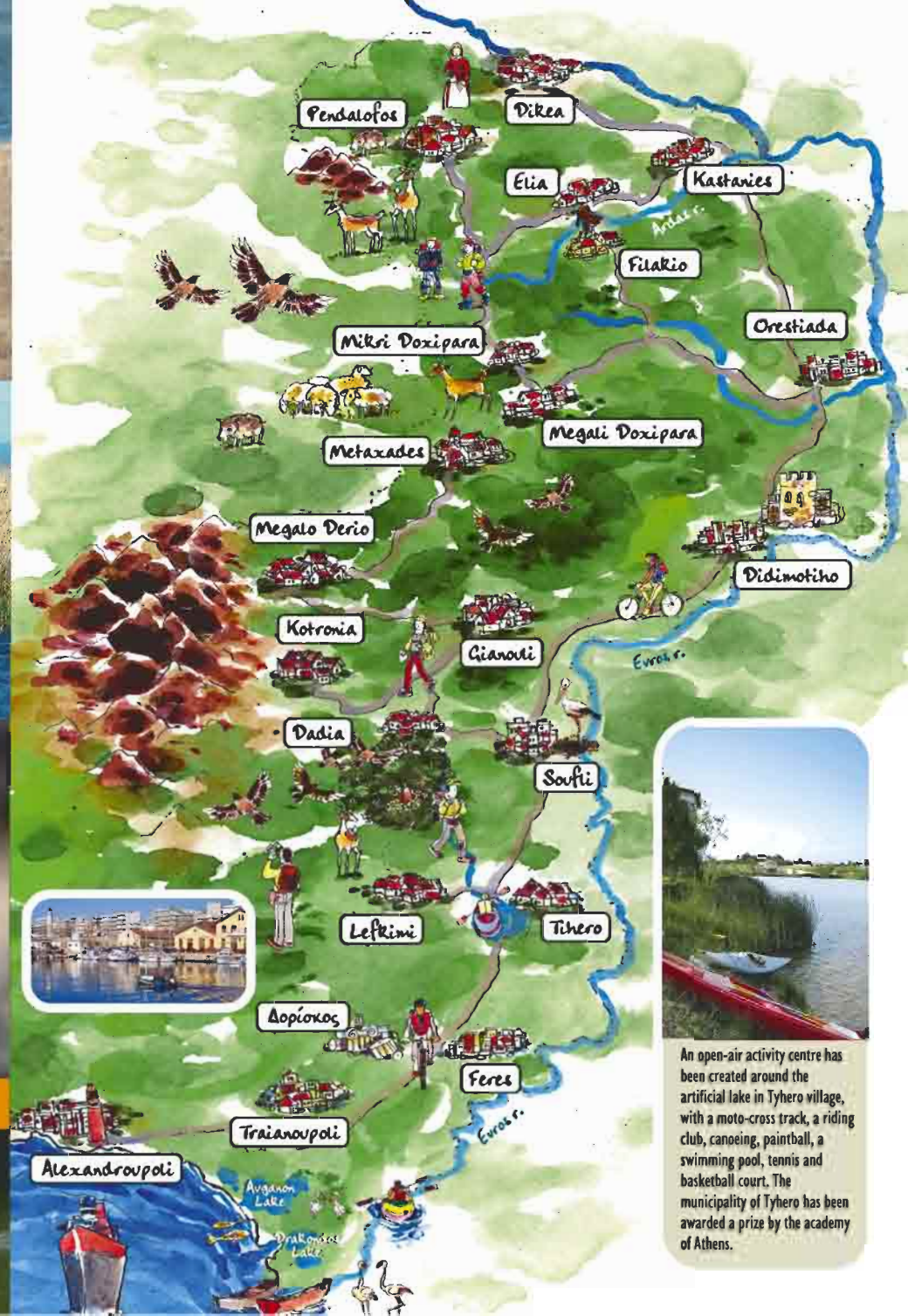


## Evros Delta

At a distance of 20 km from Alexandroupolis, the Evros river forms an ecosystem of international significance. The Delta wetland consists of riverside woods, wet meadows, reeds and lagoons. The 316 listed bird species include many waterfowls, birds of prey, herons, pelicans and seabirds, as well as rare species such as the Lesser White-fronted Goose, the Slender-billed Curlew and the Greater Spotted Eagle. The information centres at Traianoupoli and Feres can provide visitors with information on recommended routes.



Bridge of the 16<sup>th</sup> century



An open-air activity centre has been created around the artificial lake in Tyhero village, with a moto-cross track, a riding club, canoeing, paintball, a swimming pool, tennis and basketball court. The municipality of Tyhero has been awarded a prize by the academy of Athens.

birdwatching at the Delta National Park and at the biotope of Vistonida



# Realm of the birds of prey

Along with the timeless natural beauty of the Thracian landscape, the region of Dadia offers yet another rare "summit" meeting with the wildlife. Of the 38 birds of prey species in Europe, 36 nest in this location. You do not need to be an expert to observe one of the biggest birds of prey in the world and enjoy its flight, until it spectacularly lands with its wings wide open just a couple of meters away from where you stand. A visit to the region of the National Park

of Dadia - Lefkimi - Soufli can be combined with all the other routes around Thrace, since the park is located at the foothills of Rodopi, near the coastal zone and beside Evros river. A daily excursion from Alexandroupoli will suffice to give you a first impression, however, if you want to enter deep into the Park's forests and track its complex ecosystem, you will require some accommodation at one of the beautiful guesthouses in the region.



## Dadia - Lefkimi - Soufli forest

The National Park is located north of Alexandroupolis. The forest with its perennial pines, oaks, beeches and firs hosts a particularly rich fauna consisting of 220 species of birds, 40 species of reptiles and amphibians, and 48 species of mammals. Rare birds of prey find refuge at Dadia, where there is one of the last two black vulture habitations in Europe. At the information centre of the Dadia Ecotourism Centre, located on the forest verge, you may obtain information on the paths leading to the Observatory and the trough, Gibrena hill and the recreation area in Katrantzides.

### Lefkimi - Kapsalo

Set off by car from the picturesque settlement of Lefkimi and drive along a 13km asphalt road to the highest peak, Kapsalo, at an altitude of 620m. From here, the best natural bird observatory, you can enjoy a panoramic view of the entire Evros region and the islands of the Northern Aegean.

### Lefkimi - Virini - Pessani - Dadia

Virini is at a distance of 5km (asphalt road) from Lefkimi and Pessani is a further 20km (fair dirt road). From Pessani, one can turn right towards Katrantzides and Dadia (10km asphalt road) or left towards the Baths in Traianoupolis. Both routes traverse beautiful forests with a rich wildlife, oaks and black pines.

bird observatory at Dadia Forest



### Dadia (by bicycle)

A lovely, easy 5km route, starting from the Ecotourism Centre of Dadia that traces a large circle around the boundaries of the protected area and ends at the edge of the village.



### Dadia - Kotronia - Protoklisi

The racing route organized by the 4X4 club of Evros. It can be followed by a standard car (asphalt road and passable dirt roads - 30 km) or by a 4X4 vehicle (forest roads - 20 km). The route traverses the protected region of Dadia, where you can see many birds of prey. Time permitting, you can continue from Protoklisi to Metaxades, Polia, Alepohori, Zoni, Therapeio, crossing the plains and the oak forest. By standard car the route consists of 50 km of asphalt road; 4X4 vehicles can travel for 40km along forest roads.



Dadia



# Realm of the birds of prey

Along with the timeless natural beauty of the Thracian landscape, the region of Dadia offers yet another rare "summit" meeting with the wildlife. Of the 38 birds of prey species in Europe, 36 nest in this location. You do not need to be an expert to observe one of the biggest birds of prey in the world and enjoy its flight, until it spectacularly lands with its wings wide open just a couple of meters away from where you stand. A visit to the region of the National Park



At a distance of 3 km from the Information Centre, you will find the observatory and enjoy a unique experience watching birds of prey visiting the trough.



## Dadia - Lefkimi - Soufli forest

The National Park is located north of Alexandroupolis. The forest with its perennial pines, oaks, beeches and firs hosts a particularly rich fauna consisting of 220 species of birds, 40 species of reptiles and amphibians, and 48 species of mammals. Rare birds of prey find refuge at Dadia, where there is one of the last two black vulture habitations in Europe. At the information centre of the Dadia Ecotourism Centre, located on the forest verge, you may obtain information on the paths leading to the Observatory and the trough, Gibrena hill and the recreation area in Katrantzides.



Black vulture

## Lefkimi - Kapsalo

Set off by car from the picturesque settlement of Lefkimi and drive along a 13km asphalt road to the highest peak, Kapsalo, at an altitude of 620m. From here, the best natural bird observatory, you can enjoy a panoramic view of the entire Evros region and the islands of the Northern Aegean.

## Lefkimi - Virini - Pessani - Dadia

Virini is at a distance of 5km (asphalt road) from Lefkimi and Pessani is a further 20km (fair dirt road). From Pessani, one can turn right towards Katrantzides and Dadia (10km asphalt road) or left towards the Baths in Traianoupolis. Both routes traverse beautiful forests with a rich wildlife, oaks and black pines.



trough at Dadia forest



village of Dadia



National Park of Lefkimi - Dadia - Soufli

bird observatory at Dadia Forest



# Salty breeze

One of the regions of Greece with the least human intervention in nature is the southern zone of Thrace and Samothraki, bursting with opportunities for challenging activities and for a life close to nature, all year round. In the area spanning from Vistonida Lake in the west all the way to Alexandroupolis, one can observe lakes and lagoons with rich fauna, swim in well-organized or secluded beaches, go speargun fishing, wind-surf in the open sea, walk around forests,

climb rough slopes, drive on dirt roads, enjoy good food, cakes and coffee, camp or sleep in traditional guesthouses, and come into contact with two vibrant cities with their own distinct character...A weekend will suffice for a quick look around, three days are needed for a substantial tour, and a week if you include Samothraki in your plans. If you have even more time than that, then you're in luck - you can try one of the routes described here or map your own.



## Maronia - Alexandroupoli

Follow the road to Alexandroupoli via Maronia. The route has everything to offer - crystal blue waters, beautiful forests, imposing cliffs. The 25 km rough road, which becomes inaccessible in winter, requires a suitable vehicle and relevant experience. Estimate a 1.5 hour adrenaline rush combined with an amazing landscape.

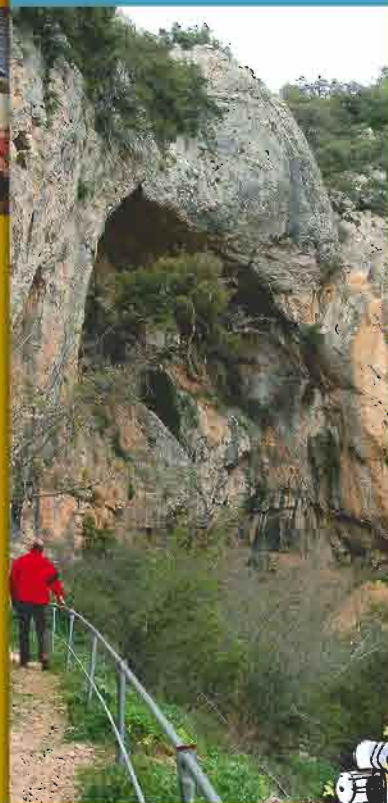
## Makri - Mesimvria - Maronia (or vice versa)

Do you cycle? One of the most impressive seaside routes in Greece awaits you, from the picturesque fishing village of Makri to ancient Mesimvria. Continue westwards, until you come to mountaineering Path E6 that leads to beautiful Maronia with its mansion houses, delicious food and unforgettable views. The route is accessible and requires 4-5 hours.



E6 path

mask of Dionysus



path at Agioi Theodoroi

## E6

The area is traversed by the European Path E6, starting from Finland and running vertically through Europe to Igoumenitsa, from where it continues to cross Greece horizontally near the borders. At Rodopi however it heads south, passing through the Nestos straits, crossing the region of Maronia and following the coastline all the way to Alexandroupoli. From Alexandroupoli it goes across to Samothraki and ends at Feggari peak. The E6 section traversing Greek ground is approximately 1000 km long.

## Alexandroupoli - Potamos - Agioi Theodoroi

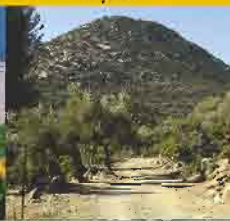
On the 7<sup>th</sup> km of the road from Alexandroupolis to Avanta, you come to the ruins of the Gatellusi castle on your left, built during the crusades. At the old railway line turn left and drive to the station of the deserted village of Potamos. Park the car there and continue on foot, along a beautiful, easy 5km path surrounded by plane trees, pines and water, all the way to the small church of Agioi Theodoroi, carved into the rock just like some churches in the region of Cappadocia.



Thracian sea



the waterfront in Alexandroupolis



# Salty breeze

One of the regions of Greece with the least human intervention in nature is the southern zone of Thrace and Samothraki, bursting with opportunities for challenging activities and for a life close to nature, all year round. In the area spanning from Vistonida Lake in the west all the way to Alexandroupoli, one can observe lakes and lagoons with rich fauna, swim in well-organized or secluded beaches, go speargun fishing, wind-surf in the open sea, walk around forests,



## Maronia - Alexandroupoli

Follow the road to Alexandroupoli via Maronia. The route has everything to offer - crystal blue waters, beautiful forests, imposing cliffs. The 25 km rough road, which becomes inaccessible in winter, requires a suitable vehicle and relevant experience. Estimate a 1.5 hour adrenaline rush combined with an amazing landscape.

## Makri - Mesimvria - Maronia (or vice versa)

Do you cycle? One of the most impressive seaside routes in Greece awaits you, from the picturesque fishing village of Makri to ancient Mesimvria. Continue westwards, until you come to mountaineering Path E6 that leads to beautiful Maronia with its mansion houses, delicious food and unforgettable views. The route is accessible and requires 4-5 hours.



## Komotini - Ismarida

Once you get to Neo Sidirochori, you have two options: head eastwards, on to the dirt road that leads to the piscatorial association on the south side of Ismarida, where you can arrange for a boat tour of the only shallow freshwater lake in Northern Greece. Should you choose to head westwards, turn left on to the dirt road before Pagouria, and drive towards the hills of Ismarida. You will enjoy a panoramic view of the lake, the riverside forest and, naturally, the birds.



## Komotini - Vistonida - Fanari

From Komotini, take the old road to Xanthi heading towards Porto Lagos (30 km), where you will find the Information Centre. At the Centre, turn right before the big bridge and drive along the accessible dirt road until you arrive at the piscatorial association of Vistonida Lake. Once there, you can buy fresh fish and watch the cormorants, the Lesser White-fronted Geese, the Dalmatian pelicans and other water birds from a very close distance. If you have a 4 X 4 vehicle you can drive towards Nea Kessani and northwards to the lake embankment. Follow the embankment up to Kosynthos river - opposite you will see the ruins of the Byzantine city of Anastasoupoli. The route is a 15 km drive through lush vegetation and offers a very good view of the birds. On the way back, you can head east to Fanari, the picturesque fishing village with its large, sandy beaches.



Clean seas, a splendid coastline. Whether more or less organized for tourists, all beaches in Rodopi are well worth a visit: from the lagoon complex at Vistonida Lake and Fanari with its vast sandy beach to the sparkling small white beach at Kageles.



the waterfront in Alexandroupoli

E6 path

mask of Dionysus

bird watching at Vistonida Lake

the seafont at Agia Paraskevi

ancient theatre, Maronia

Maronia

mosaic 3<sup>rd</sup> century B.C.



# Salty breeze



**Samothraki**, the most singular island in the Aegean Sea! Next to its beautiful beaches and clean seas, you can find varied, untamed natural surroundings, impressive heights, waterfalls and natural "pools", the famous "vathres", and the Temple of the Great Gods, where the ancient Kavirian Mysteries were performed. Discover the roots of the civilization that gave birth to the Victory of Samothraki, walk in the shadow of Genoese castles, face up to the difficult passages leading to the Feggari mountain peak, the highest point on the island. Choose a campsite; a guesthouse or a hotel and book for at least three nights for an initial acquaintance with the island.

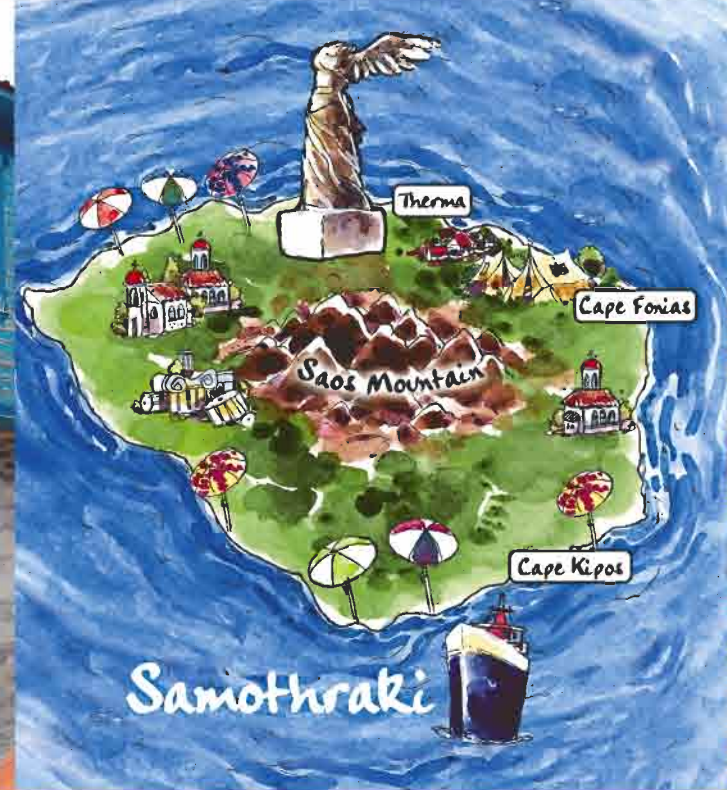
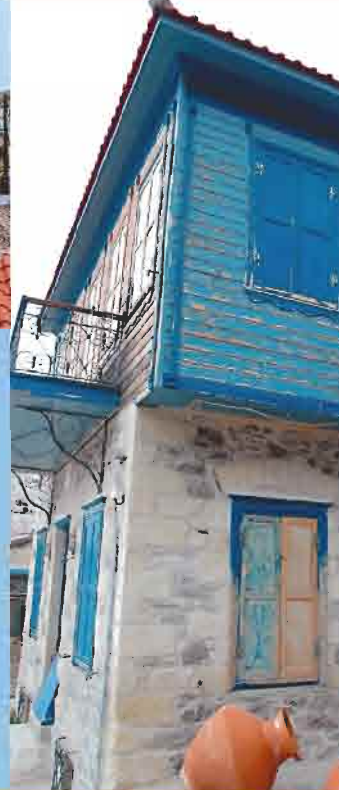


## Samothraki: Therma - Saos Mt (Feggari peak)

Take the dirt road behind the spring baths. The road ends after 200m and lush vegetation begins. Follow the path to the right and then the red markings that show you the way. After 300m you will come to the first stream, which you must cross and continue uphill to the left. After a 2-2.5 hour hike through the dense oak forest, you will see the last spring before the peak. You are now at an altitude of 1030m. Keep climbing to the left and you will cross a verdurous area with ferns. At this point, the route becomes more difficult, although the path is marked; the view however, is magnificent. From the three mountain peaks you come across, the highest is the central one at 1612m.

## The waterfall of Fonias River

The route crosses a riverside forest with perennial plane trees, slivers and ferns, leading to the waterfalls of Fonias River. Surrounded by lush vegetation, the water falls from a height of 20m from Feggari peak on Mt Saos. After the first waterfall, the route becomes more difficult and should not be attempted without a guide.



Saos peak

Temple of Samothraki

Fonias River

Vathres

Pahia Ammos





## hotels of Evros

### ALEXANDROUPOLI

**ALEXANDER BEACH HOTEL** (\*\*\*\*, 142 rooms, 282 beds)  
3rd km ALEXANDROUPOLIS - N. CHILI, τ. +30 25510 39290-5

**ASTIR** (\*\*\*\*, 52 rooms, 97 beds)  
280, DIMOKRATIAS AVE, τ. +30 25510 26448

**GRAND HOTEL EGNATIA** (\*\*\*\*, 114 rooms, 215 beds)  
EGNATIA PARK, τ. +30 25510 83000, 82800

**THRAKI PALACE** (\*\*\*\*, 86 rooms, 175 beds)  
4th km N.R. ALEXANDROUPOLIS - THESSALONIKI,  
τ. +30 2551089100

**NEFELI** (\*\*\*\*, 37 rooms, 88 beds)  
τ. +30 25510 40401

**ATHINA** (\*\*, 26 rooms, 62 beds)  
53, K. PALAIOLOGOU ST, τ. +30 25510 34492, 26034

**ATHINA** (\*\*, 23 rooms, 43 beds)  
TRAIANOUPOLIS AVE, τ. +30 25510 61208

**ALEX** (\*\*, 32 rooms, 60 beds)  
294, DIMOKRATIAS AVE, τ. +30 25510 26302

**ALKYON** (\*\*, 32 rooms, 59 beds)  
1 MOUDANION ST, τ. +30 25510 23593-4

**APHRODITI** (\*\*, 20 rooms, 36 beds)  
2nd km ALEXANDROUPOLIS -  
N. MAKRI, τ. +30 25510 34823-6

**DIAS** (\*\*, 16 rooms, 29 beds)  
13, TROADOS ST, τ. +30 2551081934-6

**HERA** (\*\*, 32 rooms, 60 beds)  
179 DIMOKRATIAS AVE, τ. +30 25510 25995

**ISIDORA** (\*\*, 30 rooms, 58 beds)  
TRAIANOUPOLIS AVE, τ. +30 25510 61203

**CLEO** (\*\*, 47 rooms, 98 beds)  
AG. PARASKEVI, NEA MAKRI, τ. +30 25510 71311

**MARIANA** (\*\*, 14 rooms, 20 beds)  
11, V. GEORGIU & MARGARON ST, τ. +30 25510 81455-6

**PARK** (\*\*, 29 rooms, 48 beds)

456-8 DIMOKRATIAS AVE, τ. +30 25510 28607

**PLAZA** (\*\*, 25 rooms, 48 beds)  
2nd km ALEXANDROUPOLIS - NEA CHILI,  
τ. +30 25510 29112

**FILOXENIA** (\*\*, 6 rooms, 12 beds)  
13A SMIRNIS ST, τ. +30 25510 89089

**CHILI** (\*\*, 24 rooms, 48 beds)  
NEA CHILI, τ. +30 25510 39545-6

**OCEANIS** (\*\*, 24 rooms, 45 beds)  
20 K. PALAIOLOGOU ST, τ. +30 25510 28830

**ANGELOS** (\*\*, 18 rooms, 30 beds)  
2nd km ALEXANDROUPOLIS - KOMOTINI,  
τ. +30 25510 39166

**AKTI SANTA ROZA** (\*\*, 28 rooms, 57 beds)  
20, SARPIDONOS ST, τ. +30 25510 25551

**VERGINA** (\*\*, 10 rooms, 24 beds)  
76, DIM. KARALI ST, τ. +30 25510 28078 23025

**ERIKA** (\*\*, 24 rooms, 51 beds)  
114 KARALI ST, τ. +30 25510 34115-6

**LINTO** (\*\*, 43 rooms, 76 beds)  
15, K. PALAIOLOGOU ST, τ. +30 25510 28808

**MAJESTIC** (\*\*, 13 rooms, 23 beds)  
7, PL. TRUMAN ST, τ. +30 25510 26444

**MITROPOLIS** (\*\*, 22 rooms, 49 beds)  
11, ATH. DIAKOU ST, τ. +30 25510 26443

**PLOTINI** (\*\*, 25 rooms, 47 beds)  
TRAIANOUPOLIS AVE, τ. +30 25510 61106

**TRAIANOUPOLIS** (\*\*, 42 rooms, 83 beds)  
TRAIANOUPOLIS AVE, τ. +30 25510 88360

**ORESTIADA**

**ALEXANDROS** (\*\*\*\*, 32 rooms, 69 beds)  
10, VAS. KONSTANTINOY ST, τ. +30 25520 27000-3

**ELECTRA** (\*\*\*\*, 50 rooms, 90 beds)  
50, PANTAZIDOU AVE, τ. +30 25520 23540 23174

**ARTEMIS** (\*\*, 19 rooms, 19 beds)  
KIPRINOS, τ. +30 25520 22699, 22113,  
6972080702

**VIENNI** (\*\*, 79 rooms, 146 beds)  
64, ORESTOU ST, τ. +30 25520 22578, 29190

**ESTIA** (\*\*, 28 rooms, 47 beds)  
PIRGOS, τ. +30 25520 81198

**SELINI** (\*\*, 41 rooms, 78 beds)  
46 SKRA ST, τ. +30 25520 22636

**AKROPOLIS** (\*\*, 35 rooms, 59 beds)  
148 VAS. KONSTANTINOY ST,  
τ. +30 25520 22277

**EVROTHIRAMA** (\*\*\*\*, 13 rooms, 35 beds)  
PENTAFOTOS, τ. +30 25560 61202

**FERES**

**ANTHI** (\*\*, 24 rooms, 43 beds)  
FERES, τ. 30 25550 24200

**SOUFLI - TIHERO**

**ZOODHOS PIGI** (\*\*, 11 rooms, 17 beds)  
LAVARA M. ORFEA, τ. +30 25530 31824

**THRASSA** (\*\*, 20 rooms, 36 beds)  
TIHERO, τ. +30 25540 20080-1

**LA STRANTA** (\*\*, 8 rooms, 12 beds)  
PROVATONAS-M. TYHEROU, τ. +30 25540 41817

**LOGA** (\*\*, 19 rooms, 33 beds)  
SOUFLI, τ. +30 25540 42242

**LIPA** (\*\*, 20 rooms, 40 beds)  
DADIA OF SOUFLI, τ. +30 25540 32263

**ORPHEUS** (\*\*, 20 rooms, 36 beds)  
SOUFLI, I TSIMISKI ST, τ. +30 25540 22305, 22922

**EGNATIA** (\*\*, 28 rooms, 14 beds)  
225 VAS. GEORGIU ST, τ. +30 25540 24124 22001

**TO KOUKOUKI** (\*\*\*\*, 11 rooms, 22 beds)  
MOKALI & OLOUROU ST, SOUFLI, τ. +30 25540 22400

### DIDIMOTIHO

**PLOTINI** (\*\*\*\*, 67 rooms, 110 beds)  
I. AG. PARASKEVIS ST, τ. +30 2553023400

**REMI** (\*\*, 6 rooms, 12 beds)  
METAXADES, MUNICIPALITY OF METAXADES,  
τ. +30 2553020100

**ANESSIS** (\*\*, 17 rooms, 29 beds)  
75, V. ALEXANDROU ST, τ. +30 2553024450

**SAMOTHRAKI**

**AIOLOS** (\*\*\*\*, 56 rooms, 100 beds)  
KAMARIOTISSA, τ. +30 25510 41595 41795

**KAVIROS** (\*\*\*\*, 28 rooms, 53 beds)  
THERMA LOUTRA, τ. +30 25510 98277-8

**KASTRO** (\*\*\*\*, 50 rooms, 100 beds)  
PALAIOPOLI, τ. +30 25510 41000-3

**MARIYA** (\*\*\*\*, 60 rooms, 120 beds)  
THERMA LOUTRA, τ. +30 25510 98230-8

**ELECTRA** (\*\*, 11 rooms, 21 beds)  
KATO KARIOTES, τ. +30 25510 41425

**NIKI BEACH** (\*\*\*\*, 38 rooms, 71 beds)  
KAMARIOTISSA, τ. +30 25510 41461, 41545

**ORPHEUS** (\*\*, 20 rooms, 40 beds)  
THERMA LOUTRA,  
τ. +30 25510 98233, 42213

**RODOFILLI** (\*\*, 8 rooms, 16 beds)  
KAMARIOTISSA, τ. +30 25510 41390

**SAONISOS** (\*\*, 8 rooms, 16 beds)  
KAMARIOTISSA, τ. +30 25510 98373, 41626

**ILIESSA** (\*\*, 7 rooms, 13 beds)  
MAKRILLIES, τ. +30 25510 95911

**DIAS** (\*\*, 5 rooms, 10 beds)  
KAMARIOTISSA, τ. +30 25510 41464

**KIMA** (\*\*, 7 rooms, 17 beds)  
KAMARIOTISSA, τ. +30 25510 41263

## hotels of Rodopi

**ANATOLIA** (\*\*\*\*, 56 rooms, 92 beds), 53, Aghialou St, Komotini, τ. +30 25310 36242-4

**ARKADIA** (\*\*\*\*, 85 rooms, 170 beds), Asomatoi, Komotini, τ. +30 25310 89119

**ARCHONTIKO CHRIS - EYE** (\*\*\*\*, 81 rooms, 153 beds), 3rd km N.R. Komotini - Alexandroupolis, τ. +30 25310 33560-63

**ASTORIA** (14 rooms, 24 beds), 28 Irinis Square, Komotini, τ. +30 25310 22707, 35054

**KING MARON BEACH** (\*\*\*\*, 54 rooms, 99 beds), Maroneia, τ. +30 25330 61345-8

**DEMOCRITUS** (\*\*\*\*, 52 rooms, 86 beds), 8 Viziou Square, Komotini, τ. +30 25310 22044, 22579

**HELLAS** (\*\*, 14 rooms, 24 beds), 35 N. Tsanakli, Komotini, τ. +30 25310 22055

**KIRIDIS** (\*\*\*\*, 23 rooms, 47 beds), 6 L. Soflou, Komotini, τ. +30 25310 73250

**XENIA** (\*\*\*\*, 26 rooms, 46 beds), 43 Sismanoglou St, Komotini, τ. +30 25310 22139, 22648

**OLYMPUS** (\*\*, 32 rooms, 50 beds), 37 Orfeos St, Komotini, τ. +30 25310 37690-2

**ORPHEUS** (\*\*\*\*, 79 rooms, 150 beds), 48, Vas. Konstantinou St, Komotini, τ. +30 25310 37180-5



**RODOPI** (\*\*\*\*, 16 rooms, 30 beds), 3 Makariou St, Komotini, τ. +30 25310 27887, 31326, 35988

**FILIA** (\*\*\*\*, 20 rooms, 40 beds), Ampelokipoi, Komotini, τ. +30 25310 31115, 27500, 70524

**DIONI** (\*\*, 14 rooms, 20 beds), Maroneia, τ. +30 25330 61101-2, f. 61103

**PLATANITIS** (\*\*\*\*, 14 rooms, 30 beds), Maroneia, τ. +30 25330 61065-6

**ROXANI** (\*\*\*\*, 15 rooms, 22 beds), Maroneia, τ. +30 25330 21500, 41391

**DENDRAKI** (10 comfortable rooms), Sapes, τ. +30 25320 21001

**KASSITERA** (3 small houses), Sapes, τ. +30 25320 22023

**VOSPOROS** (\*\*\*\*, 20 rooms, 38 beds), Arogi, Fanari, τ. +30 25350 31216

**LIMNI** (\*\*, 17 rooms), Fanari, τ. +30 25350 31446

**FANARI** (\*\*, 32 rooms, 60 beds), Fanari, τ. +30 25350 31300-1

**CAMPING FANARI**, τ. +30 25350 31219, 31217, f. +30 25350 31270



## travel - tourism agencies

**EVROS ALEXANDROUPOLI:** Alexandroupolis Tours, 26 K. Palaioologou St, Tel: +30 25510 36947, Thraki Tours, 6 Meg. Alexandrou St, Tel: +30 25510 23777, Kasapidis Tours, 19 Venizelou St, Tel: +30 25510 88381, Kikon Tours, 68 Venizelou St, Tel: +30 25510 25455, Leon Tours, 51 14th May St, Tel: +30 25510 33338, Sever Travel, 35 Dikastirion St, Tel: +30 25510 22555, Kass Line Travel, 209 Dimokratias Avenue, Tel: +30 25510 80910, **SOUFLI:** Silk Travel, 151 Vas. Georgiou St, Tel: +30 25540 23366, **DIDIMOTIHO:** Saridis Tours, 4 Begeti St, Tel: +30 2553025888, Berberis Travel, 82 Venizelou St, Tel: +30 25530 20310, **ORESTIADA:** Alpino Tours, 200 Konstantinoupoleos St, Tel: +30 2552081386, Anastasiadis Dimitrios, Loh. Diamanti St, Tel: +30 2552029126, Eifel Tours-Kaloutsikidis Christodoulos, 219 Konstantinoupoleos St, Tel: +30 25520 23560, Karakatsanis

Ch.& CO, 47 Evripidou St, Tel: +30 2552029526, Hako Tours, 48 Sikra St, Tel: +30 25520 25013, Hatziagiannis Tours, 128 Konstantinoupoleos St, Tel: +30 25520 25666, **FERES:** Vira Tours, 14 Omonias Square, Tel: +30 2555023316, **RODOPI KOMOTINI:** Vergidou Broders Tours, 63 F. Etaireias, Tel: +30 25310 24188, Veroi Tours, 3 Orfeos St, Tel: +30 25310 81741, Gubili Tours, 29 Orfeos St, Tel: +30 25310 37037, Dimokriteio Travel, 31 Arh. Chrisanthou, Tel: +30 25310 82920, Orfeis Travel, 13, Ap. Souzou St, Tel: +30 25310 36902-3, Papadopoulos Vassiliis & Co, 97 Har. Trikoupi St, Tel: +30 25310 24331, Paraschakis Travel, 54 Har. Trikoupi St, Tel: +30 25310 26934, Platon Tours, 3 Filikis Etaireias St, Tel: +30 25310 32077, Rodopi Tours, Tel: +30 25310 26737, Stavridis Travel, 80 Har. Trikoupi St, Tel: +30 25310 23450





## Komotini

A walk around Komotini, the heart of Rodopi, takes you from the Old Clock and the Geni Cami (New Mosque) to the tinsmiths' workshops and to the old mansions, such as the old Deanery of the University of Thrace, the Club of the Citizens of Komotini, and the Municipal Library. It is worth stopping at the Koimiseos tis Theotokou Cathedral with the carved wooden temple, and at the beautiful Eski Cami (Old Mosque), built in 1608. Do not miss a return visit to the market at Hephaestus Square: antique shops, jewellers, haberdasheries, shops selling kavurmas (pieces of pork fried in grease), pastirmas (seasoned beef meat), soutzouk loukoum, sesame pulp and aromatic coffee blends, next to the traditional shops selling chick-peas with the built ovens that supply the tastiest chick peas in the country. Here, you come across locals and visitors in the most unfeigned and authentic blend of East and West.



## Alexandroupoli

You can travel with ease and comfort to Alexandroupoli by plane, train, boat or car. The fishing boats at the quay will faintly remind you of Dede-Agats, the small 19th century settlement that preceded the modern, developing city. A relaxing walk around the well-designed square, with the predominant lighthouse built in 1880, will prepare visitors to experience the rhythm of the city, its history, its tastes, and its vivacious entertainment. Alexandroupoli is more than the privileged centre of a truly charismatic region - it offers hospitality and pleasure. In a few words, it is the perfect way to start or round off any trip.

CONCEPT  
Blue Unlimited

PRODUCTION  
"FILIPPOS" Northern Greece Publishing S.A.

PHOTOGRAPHS  
George Avgoustinos, George Voloudakis, Babis Giritziotis, Dimitris Natsis, Dinos Panidis, Kostas Pistolas, Heinz Troll, Region of Eastern Macedonia and Thrace

ILLUSTRATIONS  
John Groidis

## travel informations

Alexandroupoli is 850 km far from Athens and approximately 350 km from Thessaloniki. Komotini is 780 km far from Athens and 270 km from Thessaloniki. If travelling by car, one needs 8.5 hours from Athens and 2.5 hours from Thessaloniki.

### INTERCITY BUS (KTEL)

Daily services from Athens and Thessaloniki to Alexandroupolis and Komotini.

**Alexandroupolis KTEL**  
+30 25510 26 479

**Komotini KTEL** +30 25310 22912  
**Athens KTEL** +30 210 5152224

**Thessaloniki KTEL**  
+30 2310 595419

Apart from the regular intercity bus services, trains are also quite efficient for local transport.

### HELLENIC RAILWAYS ORGANISATION (OSE)

There are several daily train connections between Athens, Thessaloniki, Alexandroupolis and Komotini.

**Athens OSE**  
tel.: +30 210 52 47 777

**Thessaloniki OSE**  
tel.: +30 2310 517 517

**Alexandroupolis OSE**  
tel.: +30 25510 26 395

**Komotini OSE**  
tel.: +30 25310 22650-26804

To visit the area one may also rent a car.

### AIR TRAVEL

Olympic airlines and Aegean airlines provide for several daily flights from Athens to Alexandroupolis. Alexandroupolis International Airport Democritus is 68 km far from Komotini.

### "Democritus" airport

tel.: +30 25510 89300

### "Alexander the great" airport

(Kavala) tel.: +30 25910 53270-3

### Alexandroupolis Olympic airlines office

tel.: +30 25510 45198

### Komotini Olympic airlines office

tel.: +30 25310 36900

### Olympic airlines

tel.: +30 801 1144444

### Aegean airlines

tel.: +30 0801 20000

### Alexandroupolis Aegean airlines office

tel.: +30 2551 89 150

### FERRY CONNECTION

Daily itineraries connect Alexandroupolis port to Samothraki, tel.: +30 25510 41505 and once weekly to the central Aegean islands and to Lavrio, tel.: +30 25510 26721. There is also a weekly connection to the eastern Aegean islands and to Crete, tel.: +30 25510 25338.

### PORT AUTHORITY TELEPHONES

**Alexandroupolis**  
+30 25510 26465

**Porto Lagos (Kavala)**  
+30 2510 223716

**Agios Haralambos (Maronia)**  
+30 25310 73804

### USEFUL TELEPHONE NUMBERS

**Alexandroupolis Tourist Police**  
+30 25510 66119

**Alexandroupolis Port Authority**  
+30 25510 26468

**Region of Eastern Macedonia and Thrace**  
+30 25310 81830-50

**Prefecture of Evros - Tourism Department**  
+30 25510 36930

### MORE INFORMATION

[www.evros.gr](http://www.evros.gr), [www.remth.gr](http://www.remth.gr)

## info

### INFORMATION CENTRES

#### Trianoupoli

Evros Delta National Park,  
tel.: +30 25510 61000

#### Ferres

Municipal tourist centre (Evros Delta),  
tel.: +30 25550 24310

#### Didimoticho

Tourist pavilion, tel.: +30 25530 22222

#### Dadia - Lefkimi - Soufli National Park

tel.: +30 25540 32209

#### Samothraki

At Kamariotissa harbor, tel.: +30 25510 89242

#### Vistonida

tel.: +30 25410 96646

### MEDICINAL BATHS / SPAS

#### The Thermal Baths of Trianoupoli

The current facilities provide spa therapy, drinking therapy, inhaling therapy and hydrotherapy throughout the year.  
Tel. +30 25510 61225, 61215

#### The Thermal Baths of Samothrace

The island sources were already renowned for their therapeutic properties in Byzantine times. 14 km far from Kamariotissa, Therma built-up area hosts hydrotherapy facilities open from June to October.  
Tel. +30 25510 98229

### MOUNTAINEER ASSOCIATIONS

There are three organised associations in the area. Experienced mountaineers, keen to provide information and to guide you in the organization of your sallies.

#### Komotini Hellenic Mountaineer Association

Feel free to contact their president Mr. Kostas Sarantakos, an experienced mountaineer. Tel. +30 25310 29411

#### Samothraki Mountaineer Association

Christos Geramanis  
Tel.: +30 25510 41611 (morning)  
+30 25510 42239 (afternoon)

#### Pentalofos Trekking and Naturalist

#### Association "Drymos"

Vasilios Vasiliadis, tel.: +30 6945 644204

### ALTERNATIVE TOURISM COMPANIES

#### RIVERLAND

Tel.: +30 25410 62488, [www.riverland.gr](http://www.riverland.gr)

#### ECOEXPLORER

Tel.: +30 25330 21501, 41550,  
[www.ecoexplorer.gr](http://www.ecoexplorer.gr)

#### DRESTIADA 4x4 CARS CLUB

Tel.: +30 6937 026677, Mr. Raptis



## Komotini

A walk around Komotini, the heart of Rodopi, takes you from the Old Clock and the Geni Cami (New Mosque) to the tinsmiths' workshops and to the old mansions, such as the old Deanery of the University of Thrace, the Club of the Citizens of Komotini, and the Municipal Library. It is worth stopping at the Koimiseos tis Theotokou Cathedral with the carved wooden temple, and at the beautiful Eski Cami (Old Mosque), built in 1608. Do not miss a return visit to the market at Hephaestus Square: antique shops, jewellers, haberdasheries, shops selling kavurmas (pieces of pork fried in grease), pastirmas (seasoned beef meat), soutzouk loukoum, sesame pulp and aromatic coffee blends, next to the traditional shops selling chick-peas with the built ovens that supply the tastiest chick peas in the country. Here, you come across locals and visitors in the most unfeigned and authentic blend of East and West.



## Alexandroupoli

You can travel with ease and comfort to Alexandroupoli by plane, train, boat or car. The fishing boats at the quay will faintly remind you of Dede-Agats, the small 19th century settlement that preceded the modern, developing city. A relaxing walk around the well-designed square, with the predominant lighthouse built in 1880, will prepare visitors to experience the rhythm of the city, its history, its tastes, and its vivacious entertainment. Alexandroupoli is more than the privileged centre of a truly charismatic region - it offers hospitality and pleasure. In a few words, it is the perfect way to start or round off any trip.

CONCEPT  
Blue Unlimited

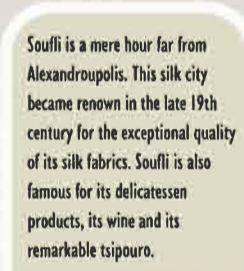
PRODUCTION  
"FILIPPOS" Northern Greece Publishing S.A.

PHOTOGRAPHS  
George Avgoustinatos, George Voloudakis, Babis Girtziotis, Dimitris Natsis, Dinos Panidis, Kostas Pistolas, Heinz Troll, Region of Eastern Macedonia and Thrace

ILLUSTRATIONS  
John Groidis



Didimoticho is a beautiful city that welcomes the visitor with its well-kept Byzantine castles and towers. Its traditional part is a remarkable outdoor museum amidst the modern city. Each alley of old Didimoticho is a faithful witness to its noble origins, whispering of king legends, loves and wars.



Soufli is a mere hour far from Alexandroupolis. This silk city became renown in the late 19th century for the exceptional quality of its silk fabrics. Soufli is also famous for its delicatessen products, its wine and its remarkable tsipouro.



In the northern part of Evros, Pentalofos landscape is very similar to that of Tuscany. It hosts the largest game farm of Greece. One can visit the farm, see the deers, pheasants and wild boars and be treated to exquisitely cooked game dishes.



### NOTES TO THE MAP

- EGNATIA HIGHWAY
- NATIONAL HIGHWAY
- B-ROADS
- NON-ASPHALT ROADS
- RAILWAYS
- FERRY-ROUTES
- BORDERS OF THE PREFECTURES
- MOUNTAIN PEAKS
- TOWNS OVER 5.000 INHABITANTS
- TOWNS WITH UP TO 5.000 INHABITANTS
- VILLAGES WITH UP TO 1.000 INHABITANTS
- LARGE URBAN CENTRES
- ARCHAEOLOGICAL MONUMENTS
- CASTLE/FORTRESS
- CHURCH/MONASTERY
- CAMP SITE
- BEACH
- MARINA
- CAVE
- LIGHTHOUSE
- FOREST
- AIRPORT
- THERAPEUTIC BATHS/SPRINGS
- CUSTOMS



**GREECE**  
MINISTRY OF TOURISM  
GNTO



**EASTERN MACEDONIAN-THRACE PREFECTURE**



EUROPEAN UNION GREEK REPUBLIC